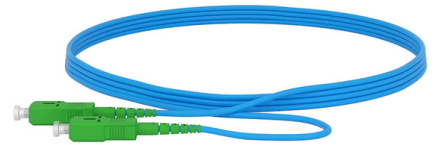
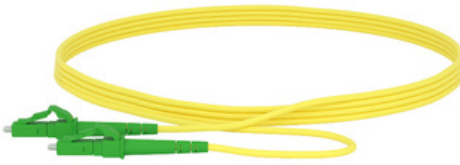
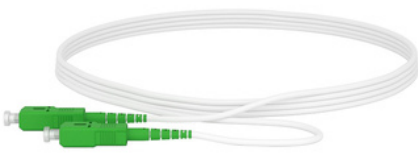


## PATCHCORD SX SM OS2

### GENERAL DESCRIPTION

Fiber Optic Patchcord 9/125 OS2 Simplex available in various sizes and connectorizations, both UPC than APC, available with the main fibers singlemode used: G652D, G657A, G657B. Customizable for the FTTH market. These patchcords utilize simplex single-mode fiber, characterized by a core diameter of approximately 9 microns and a cladding diameter of 125 microns. This configuration is particularly well-suited for long-range communications, making it a popular choice for many advanced networking environments.

Simplex single-mode fiber optic patchcords are ideal for applications that require high-speed data transmission over long distances. They can support data rates of 1 Gb/s, 10 Gb/s, 40 Gb/s, and even 100 Gb/s over distances that can extend up to 10 kilometers or more, depending on the specific requirements and network equipment used. This high performance makes them suitable for various high-bandwidth applications such as telecommunications, Ethernet, and fiber channel.

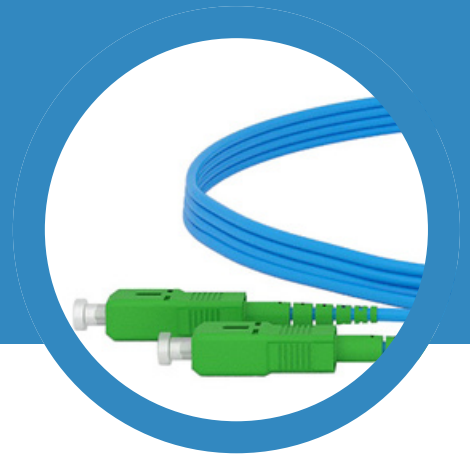


### FEATURES

- Single Mode
- Simplex Configuration
- High Precision ceramic ferrule with excellent concentricity
- 100% Inspection for optical properties and fiber end face finish
- LSZH Sheath

### APPLICATION

- LAN, WAN and Metro Networks
- FTTH projects & FTTX Deployments
- CATV Systems
- GPON , EPON
- Fiber Optic Test Equipments
- Database Transmit Broadband Net



## TECHNICAL INFO

Cable	Connector	SC, LC, FC, MTRJ and ST
	Fiber Type	Single mode 9/125
	Strength Member	Aramid Yarn
	Jacket Colour	Yellow, Blue, White, Red
	Jacket Thickness (mm)	0.45 +/- 0.05
	Cable Diameter (mm)	1.6/1.8/2.0/3.0 mm
Optical Specification	Insertion Loss	Typical: <0.2dB, Max. 0.3dB (MTRJ: Max. 0.5dB)
	Return Loss	≥50Db upc - ≥60Db apc
Mechanical Specification	Connector Ferrule	Ceramic, (MTRJ: PS- Polyphenylene Sulphide)
	Apex Offset	<50um
	Fiber Height	±100nm
	End-face Radius of Curvature	7mm < R < 25 mm (Excluding MTRJ)
	Repeatability	<0.2dB 1,000 times mating cycles
Working Temperature	From -40°C to + 85°C	
Storage Temperature	From -40°C to + 85°C	
General	1. Fiber cable according to IEC 60793-2;	
	2. End surface test is according to WI-QJ-021;	
	3. Test standard: IL<=0.3dB @ 850nm	
	4. ROHS Compliant.	