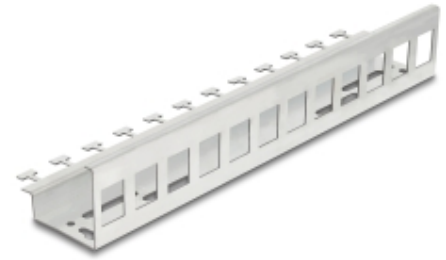


# Keystone Metal Holder 12 port for DIN rail and wall mounting

## Description

This Keystone holder by Delock can be mounted on a wall or to a 35 mm DIN rail. With its standardized dimensions, it is suitable for easy snap-in mounting of 12 Keystone modules.



**Item no. 90631**

EAN: 4043619906314

Country of origin: China

Package: Box

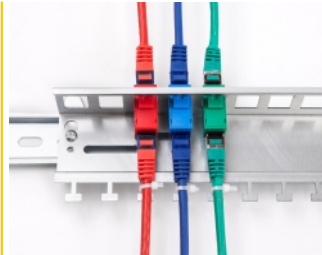
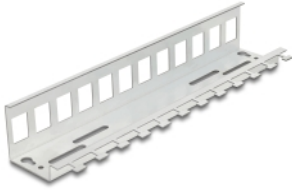
## Technical details

- 12 Keystone ports 19.2 x 14.9 mm
- Mounting options:
  - Wall mounting (with drill holes)
  - DIN rail mounting 35 mm (clips included)
- Material: metal
- Dimensions (LxWxH): ca. 265.0 x 64.0 x 44.5 mm

## Package content

- Keystone mounting
- 2 x DIN rail clip
- 2 x screw 3.8 x 25.0 mm
- 2 x screw M5 x 6 mm
- 2 x dowel
- 12 x cable tie 2.5 x 80 mm

## Images



## General

Mounting type:	Wall mounting DIN rail mounting: 35 mm
----------------	---

## Physical characteristics

Material:	metal
Length:	265.0 mm
Width:	64 mm
Height:	44.5 mm

## Manufacturer information

---

Street	Beeskowdamm 13/15
Postal code	14167
City	Berlin
Country	Deutschland
E-Mail	info@delock.de
Website	www.delock.de