



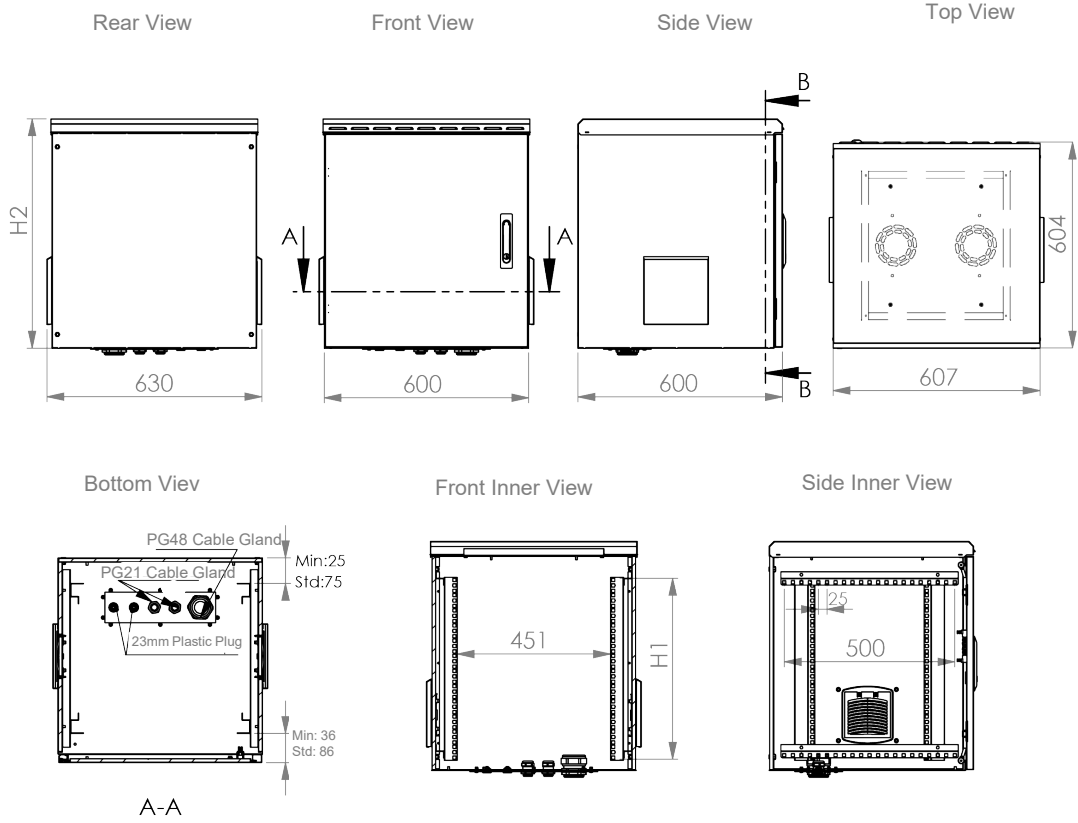
### Procase 19" IP55 Rated Wall Mounting Cabinet H:7U-26U W:600 D:600

- Monoblock welded body
- Hinged, removable, sealing gasket and 3-point locking front door
- Bottom case is suitable for cable entries
- Top case is suitable for fan mounting
- Side sides with protection panels, suitable for fan and filter use
- 4 qty 19" mounting rails that can move in cabinet depth
- Suitable for floor type, wall type or pole type use with appropriate accessory options
- Isolation module that can be assembled if needed
- 400kg loading capacity

**List code:** PRCXXU6060IP55LG

#### Technical Data

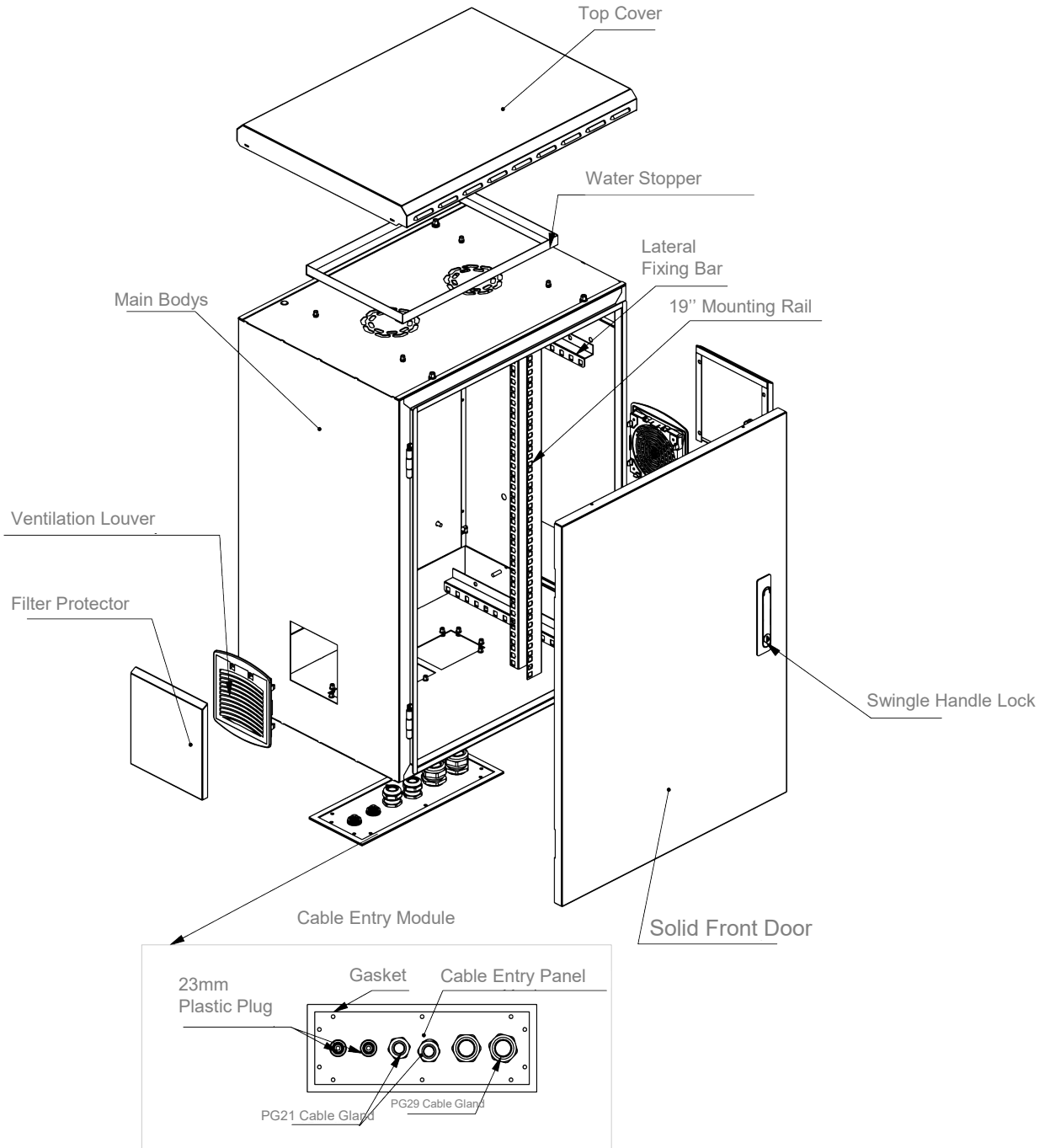
Dimensions HxWxD in mm	W:600mm D:600mm H:(Please check page 2 for height options)
Height (U)	7U-9U-12U-16U-20U-26U
Material	Sheet Steel, DIN EN 10130-99 / DC-01 6112 / DC-7122
Colour	RAL 7035 L.Gray Color = <b>PRCXXU6060IP55LG</b>
Standards	TS EN 61587-1
Load Carrying Capacity	400kg
Climatic Tests	C2
Industrial Atmosphere	A2
Static Mechanical Load Class	SL5 - LT5 -ST5 -NL5
Dynamic Mechanical Load Test	DL4V
Shock test	DL4S
Impact test	IK10
IP rating	IP 55



**Proc case 600 x 600 mm**

Product Code	Product Description	Width (W) mm	Depth (D) mm	H:1 Inner Height (mm)	H:2 Out Height (mm)
PRCT07U6060IP55LG	Proc case 7U W:600mm D:600mm	600	600	311	450
PRC09U6060IP55LG	Proc case 9U W:600mm D:600mm	600	600	400	540
PRC12U6060IP55LG	Proc case 12U W:600mm D:600mm	600	600	533	670
PRC16U6060IP55LG	Proc case 16U W:600mm D:600mm	600	600	711	850
PRC20U6060IP55LG	Proc case 20U W:600mm D:600mm	600	600	889	1025
PRC26U6060IP55LG	Proc case 26U W:600mm D:600mm	600	600	1156	1295

Exploded View



\*Please contact our sales representative for different cable glands options.

PROCASE OPTIONS

Institutional Coding Initial Character	U Height	Width- Depth Dimension	Color Code	
AAAA	XXU	WWDD	CC	
PRC	7U	6045	RAL 7035 PE	LG
	9U	6060		
	12U			
	16U			
	20U			
	26U			

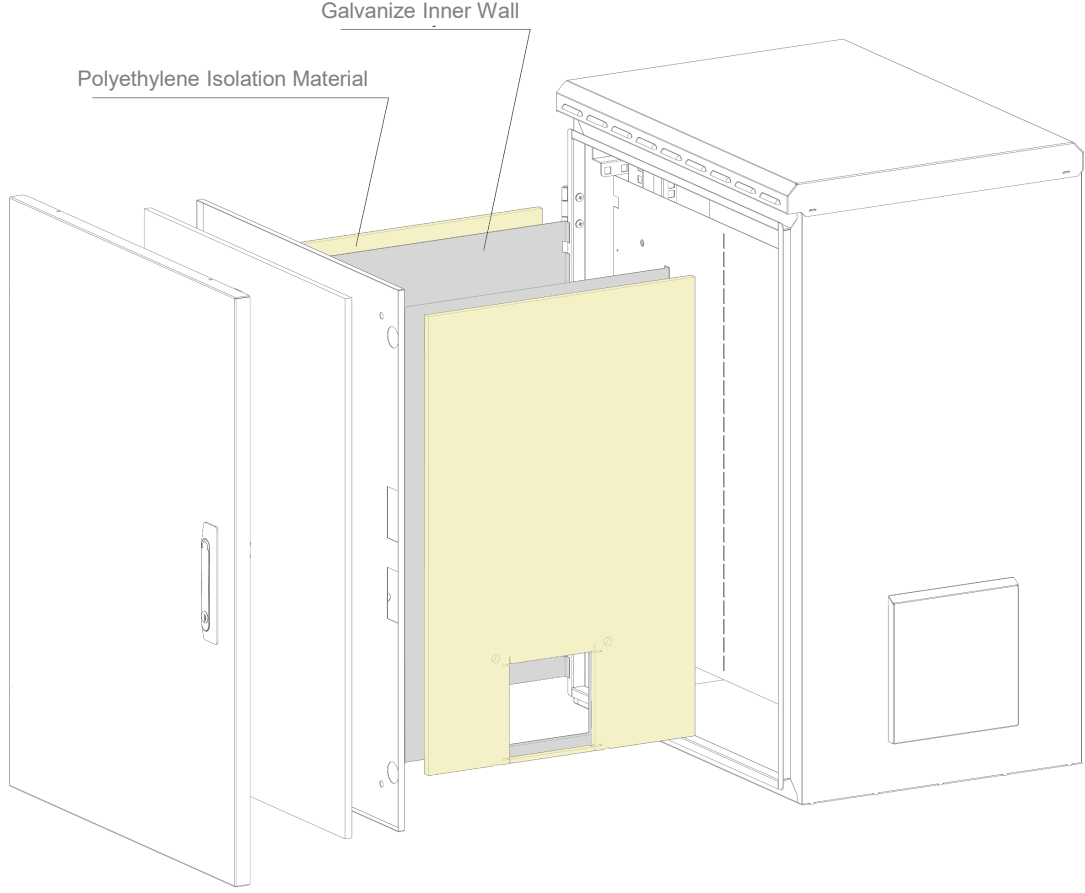
Proc case 600 x 450 mm

ASSEMBLED  
PACKING  
INFORMATION

Product Code	Product Description	WxDxH (mm)	Net Weight (kg)	Gross Weight (kg)
PRC07U6060IP55LG	Proc case 7U W:600mm D:600mm			
PRC09U6060IP55LG	Proc case 9U W:600mm D:600mm			
PRC12U6060IP55LG	Proc case 12U W:600mm D:600mm			
PRC16U6060IP55LG	Proc case 16U W:600mm D:600mm			
PRC20U6060IP55LG	Proc case 20U W:600mm D:600mm			
PRC26U6060IP55LG	Proc case 26U W:600mm D:600mm			

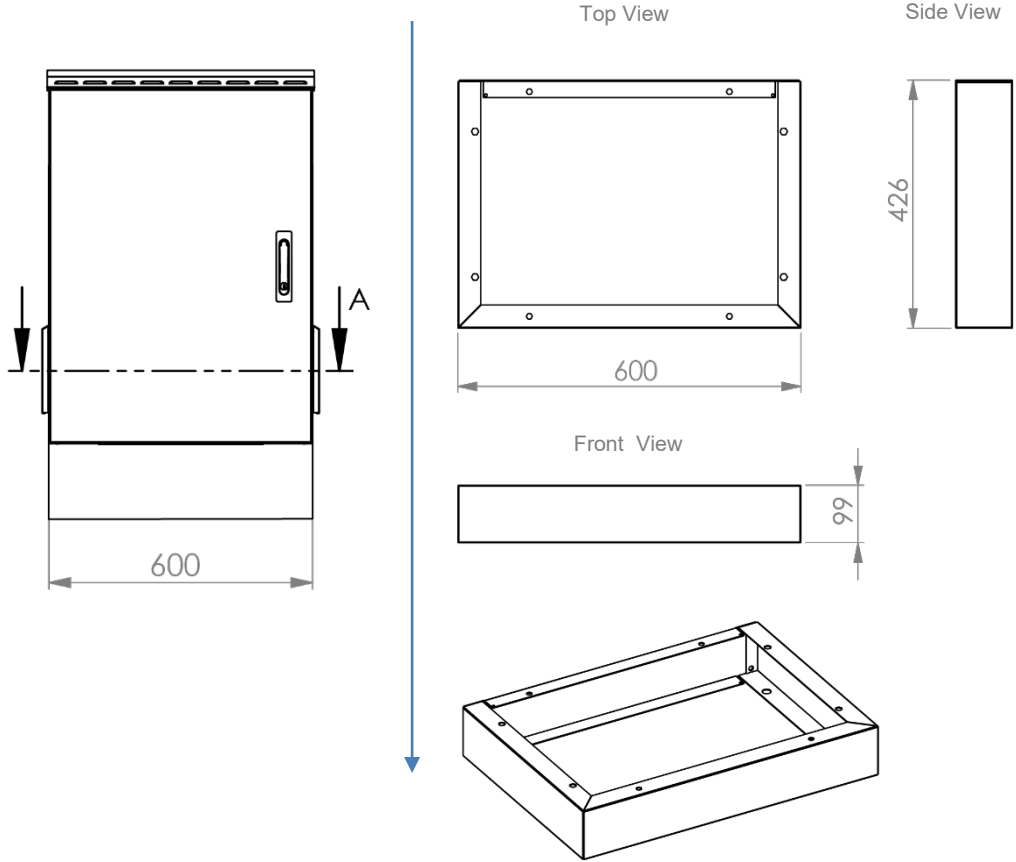
*\*The information given in the table above are average values and are for informational purposes only. It may vary according to accessories and door options. Please contact our sales representative for the exact information of your orders.*

# PROCASE ACCESSORIES

**Isolation Module****Procace 600x450mm Isolation Module**

Product Code	Product Description
PRCIZ07U6060PE10	Procace 07U W:600mm D:600mm Isolation Module Pe
PRCIZ09U6060PE10	Procace 09U W:600mm D:600mm Isolation Module Pe
PRCIZ12U6060PE10	Procace 12U W:600mm D:600mm Isolation Module Pe
PRCIZ16U6060PE10	Procace 16U W:600mm D:600mm Isolation Module Pe
PRCIZ20U6060PE10	Procace 20U W:600mm D:600mm Isolation Module Pe
PRCIZ26U6060PE10	Procace 26U W:600mm D:600mm Isolation Module Pe

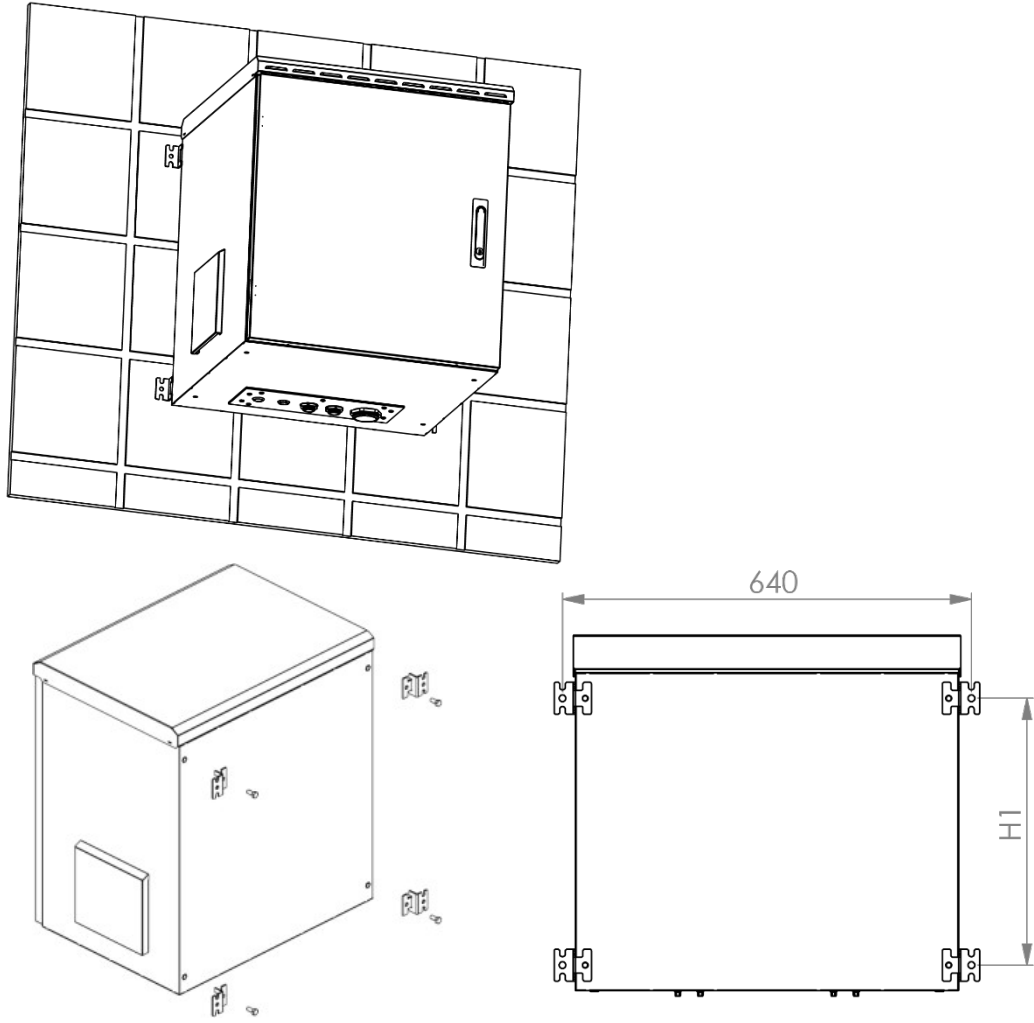
Plinth Module



Procace 600x600mm Plinth Module

Product Code	Product Description	Width (W) mm	Depth (D) mm	H:1 Inner Height (mm)
PRCBZ6060H10	Procace Plinth W:600mm D:600mm H:100mm	600	600	100
PRCBZ6060H20	Procace Plinth W:600mm D:600mm H:200mm	600	600	200
PRCBZ6060H30	Procace Plinth W:600mm D:600mm H:300mm	600	600	300
PRCBZ6060H40	Procace Plinth W:600mm D:600mm H:400mm	600	600	400

Wall Type Fixing Bracket Set

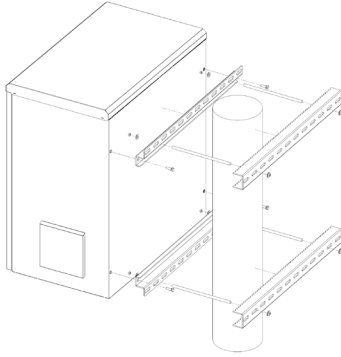


Procasse 600x600mm Wall Type Fixing Bracket Set Dimensions

Product Code	Product Description	Width ( W ) mm	H:1 Height (mm)
PRCDVMA01	Procasse 07U Wall Type Fixing Bracket Set	640	327.8
PRCDVMA01	Procasse 09U Wall Type Fixing Bracket Set	640	416.7
PRCDVMA01	Procasse 12U Wall Type Fixing Bracket Set	640	550
PRCDVMA01	Procasse 16U Wall Type Fixing Bracket Set	640	728
PRCDVMA01	Procasse 20U Wall Type Fixing Bracket Set	640	905,7
PRCDVMA01	Procasse 26U Wall Type Fixing Bracket Set	640	1172

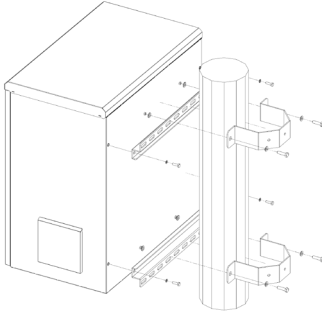
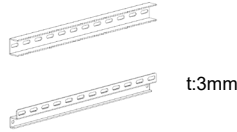


## 3 DIFFERENT POLE TYPE FIXING METHODS


**Pole Type Fixing Bracket Set**  
**Universal Type**

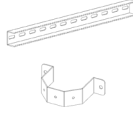
Product Code: PRCDRMA01

Pole modules; Universal type pole module provides ease of use in order to clamping wood or metal poles, it is providing extremely strong clamping on the any height/type poles without need the information of pole dimension or diameter.

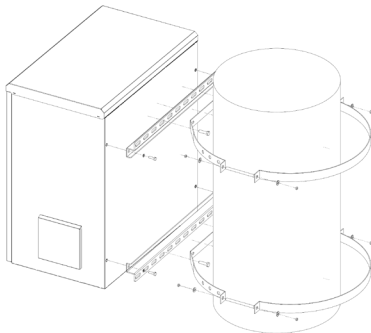

**Pole Type Fixing Bracket Set For**  
**Multi-edge type of poles**

Product Code: PRCMEMA01

Multi-edged type wall mounting brackets has been designed for hanging enclosure to the wall, Bracket thickness is 3mm.

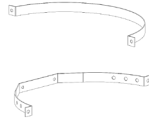


**Poles dimension /  
diameter / angles must be  
provided by the customer.**


**Pole Type Fixing Bracket Set For**  
**Round type poles**

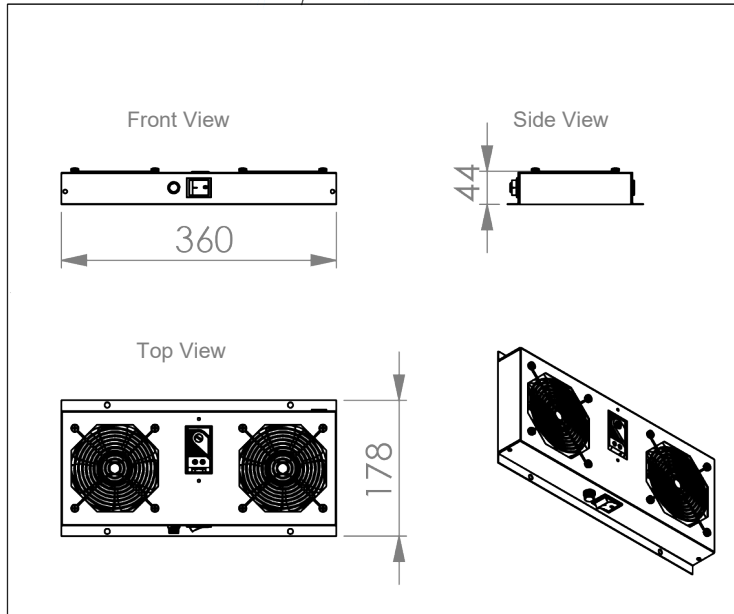
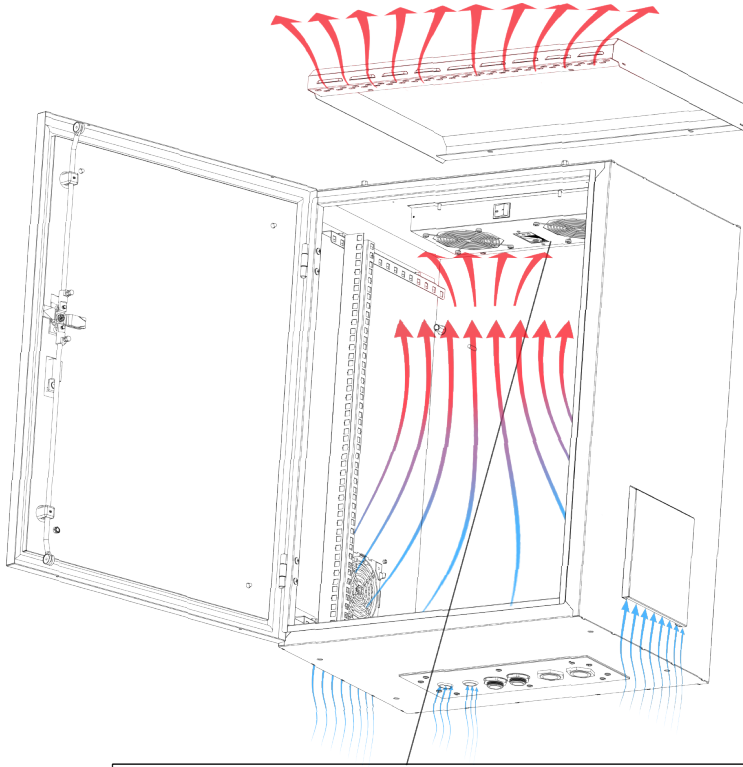
Product Code: PRCRTMA01

Round type stainless steel wall mounting brackets has been designed for hanging enclosure to the wall, Bracket thickness is 2mm.



**Poles dimension /  
diameter / angles must be  
provided by the customer.**

Fan Unit



**Product Code:** PRCFNT2

**Product Description:** Fan Unit; 2 way ventilation unit with On/off switch and thermostat control

## TECHNICAL SPECIFICATIONS

### PROTECTION INDEX

- IP20 According to IEC 61587-1 :2016 / IEC 61587-2:2011 / IEC 61587-3:2013
- IEC 60529
- IP20

### MECHANICAL PERFORMANCE

- EN 61587-1 5.2.1 / 5.2.3
- Static mechanical load test (Performance level SL 12)
- Stiffness test (Performance level ST5)
- Dynamic mechanical load test (Performance level DL4V)
- Resonance point detection test Duration of the test at each frequency was 10 minutes
- Vibration test (Sinus-IEC 60068-2-6:Fc; 2007)
- Shock test (IEC 60068-2-27: Ea; 1987) Performance level DL4S
- Impact test (IEC 60068-2-75: Eh; 2014) (Performance level IK07)
- Permissible load carrying capacity : 1500kg

### CLIMATIC TESTS (Performance level C2)

- Cold (IEC 60068-2-1 :2007; Ab ) Temperature of the exposure: -25°C +/-3°C
- Dry heat (IEC 60068-2-2 :2007; Bd) Temperature of the exposure: +70°C +/-2°C
- Damp heat cyclic (IEC 60068-2-30:2005; Db ; (cyclic 2x), variant 2)

### INDUSTRIAL ATMOSPHERE (Performance level A2)

- Salt mist test IEC 60068-2-11
- Salt Spray Test TS EN ISO 9227
- Sulphur dioxide test and hydrogen sulphide test (IEC 60068-2-42, IEC 60068-2-43 and IEC 60068-2-49)

### GROUNDING CONTINUITY

EN 61587-1 / EN 61010-1

- The continuity of the protection circuit is in accordance with the standard regulations. The measured resistance was less than 0.1 Ohm.

### STANDARDS

1. **ISO9001-2008** Quality management system must be used in the production of 19" Rack cabinets
2. 19" Rack Cabinets must have a **TSE Certificate IEC 61587-1 :2016, IEC 61587-2:2011, IEC 61587-3:2013**
3. **IEC60917 – IEC 60297** standards
4. **CE** According the **IEC/ISO 17050 – EN 62208:2011 & EN 60335-1**
5. In addition, all of the main and auxiliary materials used in the manufacturing process must comply with the following standards

**SHEET METAL:** TS EN ISO 9001:2008; TS EN 10130 :2006; DIN EN 1030- EQV; BS EN 1030-EQV; NF A36-401.

**ELECTROSTATIC POWDER PAINT:** ISO 9001:2015 ASTM D523; ASTM D2794; DIN EN ISO 2811-1; ASTM D1186/D1400; Ral:9005 or Ral:7035.

**VENTILATION UNITS ( Fan Unit )** "EMC EN55032:2015 & LVD IEC 62368-1 :2018

**CONNECTION COMPONENTS** (screw, nut, washer etc.)" TS EN ISO 7045; TS EN ISO 4032; RoHS IEC 62321 "

**CASTER SET** " TS EN 12532 , TS EN 12533 , RoHS IEC 62321:2008"

**LOCKS SYSTEMS** "DIN-EN ISO 1043-1 PA6 GFR 30; DIN-EN 1774-ZnAl4Cu1.

## TECHNICAL SPECIFICATIONS

In the production of 19" Wall Mounted, Free Standing, Pole Type Rack cabinets, it must have TSE certificate containing ISO 9001:2015 quality assurance system and EN 61587-1, (IEC 60917, IEC 60297) standards.

**Dimensions:** It should comply with IEC 60297 standard. Internal use "U" capacity of cabinets 7U-9U-12U-16U-20U-26U, excluding lock from outside to outside; It should be W:600mm, D:600 mm or W:600 D:450 mm.

**Main Body:** It should consist of three parts: the main body plate, the top plate and bottom plate. The main carrier, top and bottom plates should increase the strength of the cabinet, and should have a monoblock bended and welded structure. It should be produced from 1.50 DX51D+Z quality galvanized material. The top panel should be suitable for fan mounting, there should be a cable entry on the bottom plate of the main body. Thanks to the filters and protection covers on the side edges of the cabinet, it should be protected against dust and water, and the natural air should reach the cabinet by filtering through the filter. The hot air inside the cabinet must be circulated through the slots and shutters on the edges of the roof and under the roof, the body structure must allow wall, floor and pole type use.

It should be easily mounted on the wall, it should be easily mounted on the wall with the wall mounting fixing bracket set, on the pole with the pole mounting fixing bracket set and on the floor with the plinth. Brackets must have a load carrying capacity of at least 400 kg. A product supplied as a wall mount must only be converted to a floor type when the plinth is supplied. With the positioning of the ventilation outlets, necessary protection measures against pressurized water and sabotage must be taken. The body structure of the cabinet should be suitable for single-walled and double-walled structures. When the inner walls are supplied, they should be double-walled, depending on the situation of the cabinet in the field.

**Door structure:** The front door module should be manufactured from 1.50 DX51D+Z quality galvanized material. The highest corrosion resistance should be provided with RAL 7035 light gray epoxy polyester electrostatic powder paint applied on the monoblock welded structure reinforced with bends. The front door is made of polyurethane sealing gasket, durable between -40° and +100°C, can be opened 125° and should be metal. A 3-point locking system should be used on the front door. It should have the possibility to be made double walled after mounting in the field. The front door should be closed on the frame system with flange bended, water channel and gasket on the cabinet main body.

**Top Cover:** The hot air circulation inside the cabinet should be done through the slots and shutters on the edge of the top cover. Shutters and slots should be protected against harmful effects that may occur on the equipment inside the cabinet due to the ingress of dust blown by wind, rain, slush and splashing water, since the application areas are outdoors open to environmental impact. Top cover cannot be interfered with from the outside in any way, it should have a structure that can be screwed onto the main body.

**Paint:** Cabinets will provide high resistance against impacts; It should be painted with electrostatic RAL7035 white powder polyester paint. (ISO 9227 and ASTM B 117-85). It must be resistant to a minimum of 1000 hours of salt test and test result reports must be submitted. On metal surfaces; 80 +/- 5 micron paint thickness should be provided.

**Inner Wall:** Inner wall should be manufactured from 1.00 mm DX51D+Z galvanized material and should be reinforced with bends. The walls should be easily removable and pluggable and should not be interfered with in any way from the outside. 10 mm thick polyurethane panel or polyethylene panel between the walls should be used as heat insulation material. The heat insulation material should prevent the cabinet from overheating and cooling. Heat insulation should be applied to the front door, back and side surfaces of the cabinet. In order to make the single-walled cabinet installed in the field double-walled, it should be sufficient to supply only inner wall as an accessory.

**19" Mounting Rails:** In order to provide high corrosion resistance, it should be manufactured from 1.50 mm DX51D+Z galvanized material, mounting rails should be adjustable throughout the depth of the cabinet. Cabinets should be shipped with front mounted 1 set: 2 qty 19" mounting rails as standard. In cabinets with a depth of D:600mm, 19" mounting rails should be 1 set: 4 qty. In order to remove sharp surfaces on the profiles, deburring should be done on the edges. When the apparatus needed to convert the cabinets to wall type, pole type or floor type is requested, it should be shipped with the connection screws and should be easy to install. Cabinets should have a structure that can be used as a floor type by using wheels or levelling feets when requested.

**Cable Entries:** The cable entry panel is easily removable. Cable entry module; should be suitable for customizable cable glands. The inside of the cable glands must be closed, they must be produced from 1.5mm DX51D+Z galvanized material and painted with epoxy polyester electrostatic powder.

**Enclosure Isolation:** Using double-walled isolation in enclosures according to environmental and regional conditions is an effective solution against the heat problem of the enclosures. Circulation fans are the fans that circulate the air inside the enclosure, they should reduce the temperature and prevent heat condensation that can damage the active components. Isolation material 10 mm thick polyethylene sheet should be used.